

SUMMER FUN. MARSHALL ARTS. SHARED VISION. WATERCOLORS.

*Upper East Side of Texas*

JULY/AUGUST 2024

# county line

MAGAZINE



**DOWNTOWN**

Sulphur Springs

**LONGVIEW**

San Augustine

CountyLineMagazine.com

 **Therapet**  
PRESENTS



TOTALLY UNLEASHED  
**MASQUERADE** *Gala*

OCTOBER 26, 2024  
TYLER, TEXAS  
Auctions • Music by Big Daddy Band  
Dinner • Drinks • Games  
[Therapet.org/Unleashed](http://Therapet.org/Unleashed)



MURALS • SHOPS • MUSEUMS • RESTAURANTS



**HISTORIC DOWNTOWN TERRELL**  
[WWW.DISCOVERTERRELL.COM](http://WWW.DISCOVERTERRELL.COM)





PUBLISHER & MANAGING EDITOR  
P.A. Geddie

CONTRIBUTORS

Bill Ayers

Lisa Tang

Cindy Roller

Logan Vaughan

ADVERTISING  
pa.geddie@countylinemagazine.com

SUBSCRIPTIONS  
www.countylinemagazine.com/subscribe

County Line Magazine eEdition is published every other month, six times a year in digital format. Material may not be reproduced without written permission. Opinions expressed in articles or advertising appearing in this magazine do not necessarily reflect the views of the publisher. Mailing address: P.O. Box 705, Winnsboro, Texas, 75494 Phone: (903) 312-9556. E-mail: info@countylinemagazine.com. Website: www.countylinemagazine.com. Advertising space may be purchased by calling (903) 312-9556. We reserve the right to refuse any advertisement we deem incompatible with our mission.



CHECK OUT COUNTY LINE  
DIGITAL PUBLICATIONS  
www.CountyLineMagazine.com

## EDITOR'S NOTES

Dear Readers,

Welcome to our summer 2024 issue where you are sure to find “cool” adventures. From splash pads on the Sulphur Springs square to indoor exhibitions, the key to comfortable times in our Texas heat is to plan ahead, then jump in like a kid taking her first run of the summer down a wooden pier into cool lake water.

With an abundance of lakes in the region many enjoy swimming, boating, and even beaching along some sandy shores. Check out Sail with Scott excursions on Lake Ray Hubbard for a variety of sailing options with amazing sunrises, sunsets, and star-filled skies.

Picnics and gatherings with family and friends featuring farm fresh produce can't be beat.

Entertainment in the way of music, comedy, and theatre on stages throughout the region rival anything found in much larger cities and without crowds or congested traffic. We love our rural living here in the Upper East Side of Texas for that reason and many more including breathtaking nature at every turn.

San Augustine is hosting a traveling Smithsonian Institute exhibition this

summer called “Crossroads: Change in Rural America.” Through the Smithsonian’s Museum on Main Street (MoMS) program, they educate people on how important rural offerings are to our country. From producing agriculture and art, to keeping small town Main Streets afloat, the people of our rural communities are significantly important to American systems.

According to the Smithsonian, 52 percent of cultural organizations are located in small or rural communities. The MoMS project helps small cultural institutions find resources, do more cultural programming, and celebrate their local story.

Get a taste of some of our bountiful farm offerings at our farmers’ markets and find some of the many cultural organizations in our region in the pages of this issue with just a small representation of amazing art on display this summer. Visiting these venues is yet another way to “stay cool” in more ways than one.

We love exploring ways our artists and farmers work together in celebration of the connection between land and people. Keep the creative juices flowing!

— P.A. Geddie

## SUBSCRIBE TO THE DIGITAL MAGAZINE

- Get notified via email each time a new issue is released (6 times per year).
- Allows for flipping the pages
- PDF downloads available for entire issue or individual articles.
- Includes live links to explore more on topics of interest.
- Watch video right on the pages.
- Read from desktop, tablet, or mobile phone.
- Unlimited access to issue archives.



**county line**  
MAGAZINE

E-EDITION

LIVE. DREAM. EXPLORE.  
*Upper East Side of Texas*

www.countylinemagazine.com

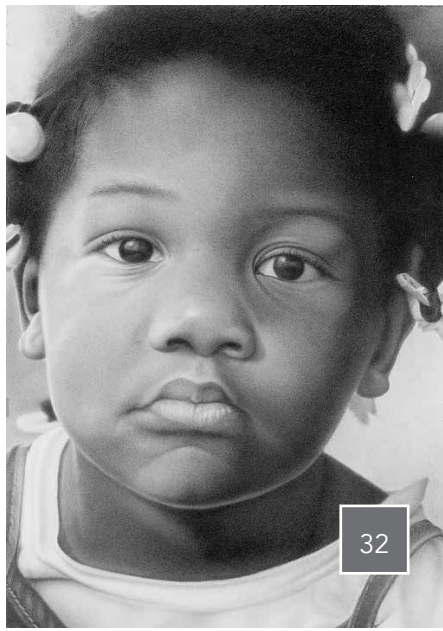
# CONTENTS



24



28



32



18

## FEATURE

- 8 Sulphur Springs Summer Splash
- 14 Downtown Live
- 18 San Augustine Rural Exhibit

## DEPARTMENTS

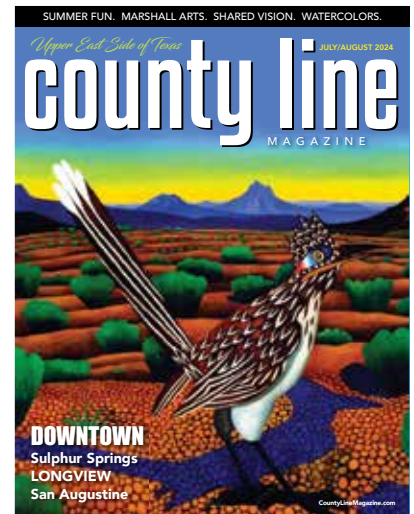
- 3 Editor's Note

## LIFESTYLE & ENTERTAINMENT

- 24 Summer Fun Things to Do
- 26 Marshall Performances
- 28 Summer on The Bowery Stage
- 29 Gala Supports Pet Therapy

## ARTS & CULTURE

- 32 Give & Take Collaborations
- 33 Tongue in Chic
- 34 Shared Vision
- 36 Hoover Watercolor Society
- 38 WCA Hosts Central Texas Artists
- 40 Texarkana Annual Juried Show
- 42 New Texas Talent
- 44 Impressionist Revolution



COVER: "Roadrunner" by Billy Hassell is featured in TMA's Surroundings exhibition.

Find MORE for your enjoyment on [www.CountyLineMagazine.com](http://www.CountyLineMagazine.com)





Come for the hospitality.  
Stay for the experience.



visit  
**McKinney.com**  
Plan your visit today!



**FUND ARTS  
EDUCATION**

*Locally Grown*

GOOD FOOD, GOOD TIMES



UPPER EAST SIDE OF TEXAS

**Farmers' Markets**

# DOWNTOWN

ROCKWALL, TX



## SAN JACINTO PLAZA MUSIC SERIES MAY - SEPTEMBER

 /DOWNTOWNROCKWALL  /DOWNTOWNROCKWALLTEXAS

## "My Peoples" & MY PARTNERS

ON DISPLAY UNTIL SEPTEMBER 14



*Dancing in the Jungle*, Frank Herbert & Alex Mack

## CULTURAL CONNECT • MADE IN AMERICA •

ON DISPLAY UNTIL DECEMBER 31



# LMFA

LONGVIEW MUSEUM OF FINE ARTS



LMFA.org  
903.753.8103  
Admission is FREE  
to ALL. Visit the website  
for exhibit details.



**THE REDLANDS  
HOTEL**

800-550-5445 903-729-2345



[www.TheRedlandsHotel.com](http://www.TheRedlandsHotel.com)

# Make a Summer Splash in Sulphur Springs



By P.A. Geddie

Summer in Sulphur Springs, Texas, comes with its own cooling system — a splash pad conveniently located downtown on Celebration Plaza.

With a backdrop of the award-winning Romanesque Revival courthouse, the lively plaza —or “Town Square Park” —is the heart of the community. Visitors wander about the inviting, park-like grounds, play giant checkers and chess games, enjoy the laughter of kids dancing with water, experience the inspiring veterans memorial, and line up to use the amusing see-through bathrooms. It is not unusual for tour bus drivers to go 50 miles off their route for a rest stop in Sulphur Springs just for that experience.

Celebration Plaza is a fun place to be with something going on most of the time day and night. Annual

events include bike rallies, car shows, Dutch oven and stew cooking, seasonal concerts, and festivals celebrating quilts, barbecue, and craft brews. Throughout the summer a Celebration Market takes place every Saturday night from 6 to 10 p.m. featuring locally grown produce, homemade goodies, arts and crafts, and entertainment.

Shopping enthusiasts enjoy a variety of stores within walking distance of Celebration Plaza. Treasures found include books, jewelry, unusual rocks, gourmet kitchen tools, home decor, clothing, flowers, antiques, and hand-embroidered linens.

Several other parks in Sulphur Springs are also well worth experiencing.

A one-acre castle playground with wooded grounds, walking trails, and

*continued page 11*

*The 1895 Hopkins County Courthouse (above) in downtown Sulphur Springs anchors the Celebration Plaza, inviting people to stay and enjoy themselves. With red sandstone and pink granite, its design includes several unusual features, such as a double-helix staircase, a clockless tower, and entrances on its northwest and southwest corners, instead of on its sides. PHOTO BY LOGAN VAUGHAN*

*Keeping cool in and around the splash pad (opposite page, top) in downtown Sulphur Springs is a favorite place to spend some time. PHOTO BY CINDY ROLLER*

*Celebration Plaza in downtown Sulphur Springs is set up to provide fun activities for visitors including oversized checkers and chess games (opposite page, bottom). The mirrored see-through bathrooms are a must try for something completely different to spice things up. Inviting benches and other seating areas are throughout the park. Visitors enjoy getting a close up view of the courthouse and the phenomenal veterans memorial area as well as statues and other artwork. PHOTO BY BILL AYERS*







## SULPHUR SPRINGS *cont. from page 8*

activities for all ages is located very close to the courthouse. Another park features a picturesque two-and-a-half-mile concrete walking trail circling a lake, taking visitors past two waterfalls, over three bridges, and through a tunnel. A fourth park has 11 acres of relocated historic buildings that capture the flavor of small-town Texas around the turn of the twentieth century. Pacific Park also has a splash and spray aquatic activity pad.

The entire Celebration Dining District captivates visitors. American and international flavors and beverages are all in a short walking distance. Guests find culinary adventures in upscale restaurants with cozy tables, Texas barbecue joints, hometown country cafes, and plenty of outdoor seating.

A variety of cuisine choices include steaks, shrimp, and fish, German bratwurst fresh off the grill, pizza direct from a wood-fired oven, gourmet sandwiches and burgers, stuffed baked potatoes, and a wide selection of craft beer and wine. For an afternoon snack, some enjoy a salty treat from an old-fashioned popcorn machine and others get ice cream in a homemade waffle cone from an authentic general store. Ice cream is also a treat during milk production tours and exhibits at the Southwest Dairy Museum and Education Center.

Those looking for overnight lodging have many choices from a variety of hotels to warm-and-cozy bed and breakfasts.

For more information on visiting Sulphur Springs, go to [visitsulphursprings.com](http://visitsulphursprings.com) or call (903) 885-5614.

---

*Waffle Chicken Kabobs (opposite, top) are a favorite treat at Haystacks in downtown Sulphur Springs. Plain & Fancy Sandwich Shoppe (bottom right) offers sandwiches, wraps, desserts, and more in a prime location with a view out full-length windows of the Hopkins County Courthouse and Celebration Plaza. Other restaurants offer a front row seat to the plaza with outdoor dining (opposite, bottom). PHOTOS BY LISA TANG*

*A local favorite, Redneck Bar & Grill offers indoor and outdoor seating. In contrast to its name, the ambiance leans more toward classy, with cozy tables and dim lighting. Grilled steaks, shrimp and fish are on the menu, but the favorite by far seems to be the steak. PHOTO BY BILL AYERS*





We specialize in creating strategic communication plans that work through a multi-channel approach including eEditions, newsletters, websites, blogs, guides, email, and social sites. Let us help you choose the most cost-effective, results-oriented promotion campaigns for the success of your business.

CALL TODAY. (903) 312-9556. PA.Geddie@COUNTYLINEMAGAZINE.COM



**SATURDAY,  
SEPTEMBER 14, 2024  
10:00 AM TO 2:00 PM**



**AUSTIN STREET  
HISTORIC  
JEFFERSON, TEXAS**

## ★ **MODEL-TS AND ANTIQUE TRUCKS WELCOME** ★

Come see antique tractors, stationary antique engines and vintage trucks.  
**Displays • Slow Race • Parade • Working Exhibits • Swap Meet**  
Free Admission to Exhibitors and the Public

### **Friday, September 13, 2024**

- 11:30AM - 6:30PM: Exhibitor registration & set-up - Austin St.
- 4:00PM Three-mile ride through Historic Jefferson  
*Antique Tractors, Trucks and Model-Ts - Come join the fun!*
- 5:00PM Pizza Party at Tony's for registered exhibitors & immediate family

### **Saturday, September 14, 2024**

- 7-10AM: Exhibitor registration and set-up on Austin Street
- 10AM-2PM: Tractor, Truck & Model-T Show, Exhibits, Swap Meet
- 11AM: Tractor & Model-T Slow Race
- 1PM: Tractor, Truck and Model-T Parade on Austin St.
- 1:45PM: Awards Presentation - vacant lot at Austin & Walnut (by General Store)

**Exhibitors:** Let us know you are coming via text, call, or email so we can plan accordingly.



For information about Jefferson, visit Jefferson Tourism Department at [visitjeffersontexas.com](http://visitjeffersontexas.com).

#### **Contact event organizers:**

Francene and Don Rainey • [info@DiamondDon.com](mailto:info@DiamondDon.com)  
Text or call 903-445-9796

Visit Facebook often for more information:

[www.facebook.com/JeffersonAntiqueTractorShow](http://www.facebook.com/JeffersonAntiqueTractorShow)



**Event Sponsor**

[www.DiamondDonEmpire.com/jefferson-antique-tractor-show](http://www.DiamondDonEmpire.com/jefferson-antique-tractor-show)

# Downtown Live

Longview's Party on the Plaza Returns in September



Every Friday from 5 to 8 p.m. in September and October downtown Longview comes alive with the sound of music. The free Downtown Live events take place outdoors in Heritage Plaza, 219 East Methvin Street, and include live entertainment, food trucks, drinks, and local business offerings.

Taking the stage for the 2024 Fall Season are Sheila and the Caddo Kats on September 6, Usual Suspects on September 13, Alex and Live Music on September 20, Clint and The Cosmic Wake on September 27, The Jazz Connection on October 4, Rick Brown & Lone Star Bootleggers on October 11, RokDox on October 18, and Nic Parr & The Selfless Lovers on October 25.

Attendees are encouraged to bring lawn chairs. Beer and wine are available from on site vendors. Oil Horse Brewery has a custom made, refrigerated trailer with taps offering their hand-crafted beers for sale. Greenside Beverage Company offers organic wines by the glass. Part of sales proceeds go to the Downtown Longview Association to help fund Downtown Live and other downtown events and improvements.

*A full lineup of music is scheduled every Friday night in September and October for Downtown Live on Heritage Plaza in Longview. Guests bring their own lawn chairs to listen, while enjoying drinks and food from street trucks as well as from surrounding establishments like signature cocktails from The Bourbon Alley, shrimp ceviche from Cace's Kitchen, and cold beer from Oil Horse Brewing Co. COURTESY PHOTOS*

There are typically two or three food trucks at each Downtown Live offering foods like gourmet grilled cheese sandwiches (Street Licious); burgers, wings, and fried fish (Taylor's Street Grill); and tacos (Tacos de Luna) to name a few. They also have a vendor at the event offering freeze dried M&Ms, Snickers, Twix, and other popular candies. Usually there is a specialty coffee and tea truck on site, too.

Around Heritage Plaza, the city installed several 50 AMP electrical outlets so that the food trucks can have electrical power without having to run their gas powered generators, allowing attendees to enjoy the live music without loud generators running in the background.

Several times throughout each season, Sunflower and Sailor (<https://sunflowerandsailor.com>), a mobile photo booth, is at the event so that people can have photos taken with a myriad of

props to make the memories more fun. Also, Ace's Faces Face Painting is on site offering face painting for all ages.

Several businesses are open in downtown Longview during and after the concerts including 903 Billiards (premium billiard tables and adult beverages); Roma's Italian Kitchen; Judd's Downtown (casual, yet upscale, dining); Solo Sandwich Co.; Cace's Kitchen (Creole inspired dishes until 6 p.m.); Greenside Beverage Company (organic wines and micro-brewery beers); The Pink Candle (DIY custom scents, personalized candles, body products); Bourbon Alley (premium cocktails); Silver Grizzly (coffee); and Oil Horse Beverage Company (handcrafted beers).

Downtown Live also takes place in the spring on Friday nights in April and May. View the upcoming Downtown Live schedule and more information at [VisitLongviewTexas.com](http://VisitLongviewTexas.com).



“YOU CAN NEVER GET ENOUGH

# BOOKS INTO THE HANDS OF ENOUGH CHILDREN”



*Dolly*



## Inspiring a Love of Reading in the Upper East Side of Texas

### BOWIE COUNTY

United Way of Greater Texarkana  
Contact: Molly Riley, (903) 794-3105  
molly@texarkanaunitedway.org  
214 Spruce St, Texarkana, TX 75501

### GRAYSON COUNTY

United Way of Grayson County  
Contact: Katie Eubank, (903) 893-1920  
literacy@unitedwaygrayson.org  
PO Box 1112, Sherman, TX 75091

### HUNT COUNTY

United Way of Hunt County  
Contact: Natalie Pegg, (903) 217-1694  
info@unitedwayofhuntcounty.org  
PO Box 224, Greenville, TX 75403

### DELTA COUNTY

Friends of the Delta County Public Library  
Contact: Lisa Carter, (903) 395-4575  
deltacountylibrary@gmail.com  
300 W Dallas Ave, Cooper, TX 75432

### GREGG COUNTY

Greater Longview United Way, Inc.  
Contact: Dr. Evan Dolive, (903) 758-0191  
edolive@longviewunitedway.org  
PO Box 411, Longview, TX 75606

### MARION COUNTY

The Rotary Club of Jefferson TX  
Contact: Toni Woods, (903) 407-2231  
tonilwoods@aol.com  
PO Box 5, Jefferson, TX 75657

### MARSHALL

Mission Marshall  
Contact: Misty Scott, (903) 472-4944  
mscott@missionmarshall.org  
2109 S. Washington St., Marshall, TX 75670

### NAVARRO COUNTY

Westminster Presbyterian Church  
Contact: April Grant, (903) 874-3781  
imaginationlibraryWPC@gmail.com  
312 N 13th St, Corsicana, TX 75110

### NEW SUMMERFIELD

New Summerfield Education Foundation  
Contact: Peggy Craft, (903) 726-3306  
pcraft@newsummerfieldisd.net  
PO Box 6, New Summerfield, TX 75780

### RED RIVER COUNTY/LAMAR COUNTY

Paris Kiwanis Imagination Library  
Contact: Claudia McKinney, (903) 784-6374  
cmck126@gmail.com  
714 CR 35010, Brookston, TX 75421

### RAINS COUNTY

Rains County Public Library  
Contact: Wendy Byrd, (903) 473-5096  
wendy.byrd@co.rains.tx.us  
PO Box 202, Emory, TX 75440

### RUSK COUNTY

Little Ones Literacy Program  
Contact: Brian Ballard, (903) 521-6435  
brian.ballard49@gmail.com  
PO Box 1762, Henderson, TX 75653

### SULPHUR SPRINGS

Sulphur Springs Independent School District  
Contact: Amanda Ridner, (903) 885-4576  
aridner@ssisd.net  
600 Calvert St, Sulphur Springs, TX 75482

### WOOD COUNTY

Pilot Club of Quitman  
Contact: Susan Ukleja, (903) 243-9384  
quitmanpilot@gmail.com  
PO Box 1265, Quitman, TX 75783

### Winnsboro Center for the Arts

Contact: Tona Blizzard, (817) 247-0607  
dpilwinnsboro@gmail.com  
655 CR 4592, Winnsboro, TX 75494

Dolly Parton's Imagination Library is a book gifting program that mails free, high-quality books to children from birth to age five, no matter their family's income. The Imagination Library relies on local partners to secure funds to cover the cost of the books and shipping fees.

[www.ImaginationLibrary.com](http://www.ImaginationLibrary.com)

## DONATE

Contact a participating  
community to contribute  
to this worthy cause.



LIVE. DREAM. EXPLORE.  
*Upper East Side of Texas*



**county line**  
MAGAZINE

www.countylinemagazine.com  
(903) 312-9556

**Tongue in Chic**  
The Humor  
and High Fashion  
of Todd Oldham

on view through  
September 15, 2024

Visit [www.tylermuseum.org](http://www.tylermuseum.org) for  
updated information about  
educational programming and  
special events.

Tyler Museum of Art  
1300 South Mahon Avenue • Tyler, TX  
[www.tylermuseum.org](http://www.tylermuseum.org)

*Slow Down  
in our Small Town*

Stately homes, gorgeous scenic drives, and local cuisine exploding with flavor. Visit Palestine, Texas for a warm welcome and a true Southern experience.

#palestinetx

**RIDE THE TEXAS STATE RAILROAD**

**NECHES WILDERNESS CANOE RACE - AUG 3**

**FOODIE FAVORITES**

**FINE(D) ART - MURAL AND SCULPTURE TOURS**

visitpalestine.com  
800-659-3484

The TEXAS TOP 40 TRAVEL DESTINATIONS

PALESTINE TEXAS

VISIT *Longview* TEXAS

**LOTS TO DO  
IN THE VIEW.**

*Welcome to Longview!*

We are the East Texas regional hub for fun. We are blue skies and fish fries. We love The Great Texas Balloon Race and Downtown Live Concerts. We are outdoor adventures, big trees, parks, trails, biking and birding. We are Art Walks, Wine Swirls and Arboretum strolls. We love our symphony, museums and live theatre. We are Longview, Texas. Come enjoy the View, we have lot's to do.

arts longview  
arts | history | culture  
the soft soul of longview

FRIENDS OF THE TEXAS HISTORICAL COMMISSION

VISITLONGVIEWTEXAS.COM

LEARN MORE

# Change in Rural America

*San Augustine is First Texas Stop for Smithsonian Exhibit*



*By P.A. Geddie*

Through their Museum on Main Street program, the Smithsonian Institution is traveling around America to rural towns during the next year with an exhibition called *Crossroads: Change in Rural America*. In cooperation with the Texas Historical Commission, there are seven shows in Texas with San Augustine in East Texas the first taking place from August 24 through October 6.

The exhibition takes visitors through the history of rural areas and how populations, economic, and social issues have changed over the decades.

“Economic innovation and a focus on the cultural facets that make small towns unique, comfortable, and desirable have helped many communities create their own renaissance,” organizers say. “The future is bright for much of rural America as small towns embrace the notion that their citizens and their cultural uniqueness are important assets.”

The exhibition includes the topics of identity, land, community, persistence, and managing change. Rural identity — so deeply rooted in the land — has profoundly shaped American identity. Family farms, country roads, and

small-town Main Streets are both real and imagined places; they are crossroads of competing visions of rural life.

Rural America’s prime attraction has always been land — locations to build homes, farms, businesses, communities, and to build a sense of worth. Americans link the reality of land ownership with the ideal of independence. Private land symbolizes political influence and contribution to the local economy. A sense of place exerts a powerful, almost spiritual, hold on many rural people. Even if they leave, it draws them back, sometimes to stay. It has inspired many

to work and advocate for preservation of natural lands so that others can experience their wonders.

A sense of community first began to form at rural crossroads where lives intersected and common interests merged. Rural people exchanged ideas, worked toward common goals, and built toward a common future. They built powerful, dynamic communities. But events of the 20th century changed the conditions so favorable for crossroads communities: some failed, some diminished, some found new ways to thrive.

Rural Americans believe in their communities. They work to find solutions to problems rather than abandoning the places where they live. But every community is different. And, challenges are unique in each community. To meet them, rural people have organized locally and partnered with special interest groups and state and federal agencies dedicated to rural issues. They develop strategies that fit their communities. The attractions of a country life are strong, inspiring the people to persist.

What happens in rural America matters to all of America. Rural America is still the primary source for the nation's food, fuel, fiber, and many critical natural resources. It is home to some of the most treasured landscapes, to thousands of species of wildlife, and ecosystems upon which all life depends. It is important for the people who live in and care for these places to survive and thrive.

All Americans who have a stake in the success of rural America play an important role in shaping its future. Change, good

*continued page 20*

*Whether enjoying their annual Sassafras Festival (opposite page) or just an average day in small town Texas, people in San Augustine look for ways to honor the town's past while embracing changes such as technology, arts programs, walking trails, music, and entertainment that make life better for everyone.*

*One business in town finding ways to blend old and new is Hardware on the Square. Its historic building goes back to the early days of Texas and is conveniently located across the street from the courthouse. The current owners bought it about 10 years ago. Along with paint, tools, nuts, and bolts, they have an artisan coffee shop (top right) in the store, inviting shoppers to sit and visit about their latest projects.*



**"Every rural person and place has a story.  
Change is part of that story."  
-Museum on Main Street**



**RURAL CHANGE** *continued from page 19*

or bad, is inevitable. Managing that change is crucial.

Members of the San Augustine community are looking forward to hosting the exhibition.

“Crossroads allows us to reflect on San Augustine’s history, present, and future and we are excited to explore what the future may hold for our community,” says Marshall McMillan, San Augustine Main Street Board Chairman. “We want to convene conversations about what makes our community unique and have developed local exhibitions and

public programs to complement the Smithsonian exhibition.”

An accompanying project in San Augustine during the exhibition is *Windows into History*, an artistic three-dimensional tour that breathes life into San Augustine’s vibrant past. Conceived and created by local artists, artisans, and historians, this project is a celebration of the community’s deep roots in Texas history. Eighteen meticulously crafted exhibits are on display throughout the town, each accompanied by QR codes that reveal videos produced by local citizens, accessible via smartphone. Funded by a generous donation from the Lions Club and a grant from the Summerlee Foundation, this Main Street project invites everyone to explore the town’s heritage.

Visitors can journey back in time to witness the first Europeans setting foot near the Ayish Bayou and learn about the Ais Indians who once thrived there. The story of Mission Dolores, established in 1717, unfolds alongside the rich history of El Camino Real, the King’s Highway

*San Augustine is a registered National and Texas State Historic Site and is a State Archeological Landmark. The nucleus of the town square is its county courthouse (above), restored in recent years to its original 1927 design. It expresses a sleek, streamlined style highlighted by simple details like a patinated bronze entry and doors flanked by matching lanterns, limestone pilasters, and a green-tile roof. The interior houses one of the largest courtrooms in East Texas. A statue of James Pinckney Henderson sits in front of the courthouse. He lived and had his law office in San Augustine, was the first governor of Texas, and held several other prestigious roles for the state.*

*Mission Dolores State Historic Site (opposite) is a popular stop along the King’s Highway. There, visitors learn important history about the Native American experience with the earliest European settlers in Texas. Originally called Mission Nuestra Señora de los Dolores de los Ais, the property also has a campground, picnic area, disc golf course, and group pavilions.*



*Preview Crossroads: Change in Rural America*

that traversed from Natchitoches, Louisiana, to Mexico City, passing right through San Augustine. The tales of Davy Crockett’s visit, the notorious 1830s gunfight over a land dispute, and the involvement of the Texas Rangers in the town are brought to vivid life.

Fifteen unique “firsts” attributed to San Augustine are on view and as well as the legacy of the timber industry, the iconic Cullen House, and the heyday of Bland Lake, a popular recreational hotspot in the early 1900s.

Guests experience the delightfully furnished 1930s dollhouse, learn about the history of the local newspaper, and witness the changes that came to East Texas with the arrival of electricity. Other activities include the Sinclair Station, famously photographed by Russell Lee, and the narrative of generations of a farming family.

San Augustine is more than just a repository of history; it is a living, breathing community that honors its past while looking toward the future. Numerous changes over the years have helped the community transform into an evolving small town with modern amenities and improved technologies that complement its rich history. The downtown hardware store features a barista coffee shop in a historic building with walls that tell tall tales.

The town holds two annual festivals, Sassafras Festival in October and Heritage Days in the spring. A master gardeners program supported by their connection with Texas A&M University takes place on the campus of their elementary school and the gardeners plan, plant, and care for Main Street pots to help keep the community attractive.

Shops offering clothing and gifts are downtown along with the San Augustine Drug Company where visitors enjoy getting a “world-famous” grapefruit highball.

A one mile walking trail is between the chamber of commerce building and the Mission Dolores State Historic Site. A popular destination for many already, Mission Dolores is set to be the future home of a replica of the original 1721 mission.

Other plans in the coming year include a farmers and artisans’ market in a newly renovated historic cotton gin and the opening of Sassafras Park with play equipment and a walking trail.

The Crossroads exhibition is a unique collaboration between the Smithsonian Institution Traveling Exhibition Services (SITES), state humanities councils across the nation, and local host institutions. SITES has shared the wealth of Smithsonian collections and research programs with millions of people outside Washington, D.C., for more than 65 years. SITES connects Americans to their shared cultural heritage through a wide range of exhibitions about art, science and history, which are shown wherever people, live, work, and play. For exhibition description and tour schedules, visit [sites.si.edu](http://sites.si.edu). To learn more about the Crossroads exhibition go to [museumonmainstreet.org/crossroads](http://museumonmainstreet.org/crossroads) and check out this informative video.

Visitors are encouraged to see the exhibition in person to learn more about rural America and to immerse themselves in the rich narratives that shaped one town that is contributing to the ongoing story of transformation and resilience. For details, call (936) 275-3172 and visit the Main Street website.



VISIT  
**Gun Barrel City**

Cedar Creek Lakefront Getaway!

**JULY 27, 2024**



**@ GUN BARREL  
CITY PARK**

**PAT  
GREEN** **&** **MIKE  
RYAN**

**DRONE SHOW**



**WWW.GUNBARRELCITY.GOV**



**FUND ARTS  
EDUCATION**



Sep 14. Georgette Jones



Oct 19. Uptown



Nov 2. Deana Carter



Dec 6. Dallas String Quartet



**MEMORIAL CITY HALL PERFORMANCE CENTER**  
**MARSHALL TEXAS**  
www.MemorialCityHall.com 903-934-7992



Casual, Classic Dining  
for Lunch or Dinner  
903-723-2404



[www.QueenStGrille.com](http://www.QueenStGrille.com)

## Enjoy Smooth Sailing in Rockwall



Embark on the perfect date night or family adventure aboard *The Seawolf* through November 2. The breathtaking 40-foot sailing catamaran takes off from the scenic Harbor in Rockwall, gracefully gliding along the water of Lake Ray Hubbard. A variety of options include 5:30 p.m. Family Daytime Sail; 7 p.m. Sunset Sail, and 8 p.m. Starlight Cruise. Feel free to bring beverages and snacks and unwind while witnessing the tranquil beauty on Lake Ray Hubbard. Located on the water side of the Dallas/Rockwall Hilton Hotel, 2055 Summer Lee Dr., Rockwall, Texas 75032. Go to [sailwithscott.com](http://sailwithscott.com) for tickets. COURTESY PHOTO

## Take a Country Roads Adventure

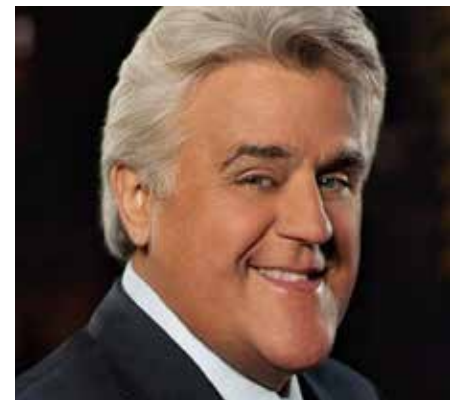


*Tour de Paris* takes place July 20 in Paris, Texas. Happening since 1985, it features multiple routes tailored to riders of all skill levels, including 14 and 24 mile off-road on the Northeast Texas Trail and five county routes. [paris texasbiking.com](http://paris texasbiking.com). COURTESY PHOTO



## GBC July Fest

Pat Green headlines July Fest at Gun Barrel City Park on July 27. Mike Ryan and others also perform and guests enjoy a high end drone show. [gunbarrelcity.gov](http://gunbarrelcity.gov)



## Jay Leno

Jay Leno is appearing at 7:30 p.m. October 26 at the Perot Theatre in Texarkana in conjunction with the Four States Auto Museum's Fall Car Show. Get tickets and more information on [perottheatre.org](http://perottheatre.org)

## FIREWORKS & FREEDOM



Click [HERE](#) for links to Community Events.



# Texas Style Shakespeare

See a variety of quality, professional theatre productions from June 27 to July 28 during the 2024 Texas Shakespeare Festival in Kilgore. Included are *Much Ado About Nothing*, *Peter & the Starcatcher*, *Julius Caesar*, *Sweeney Todd*, and *Tinker Bell*. Visit [texas-shakespeare.com](http://texas-shakespeare.com) for more information and tickets.



## Tame the Dinosaurs at Heard Museum & Wildlife Sanctuary



The annual *Dinosaurs Live* outdoor exhibition takes place starting in August at the Heard Natural Science Museum & Wildlife Sanctuary in McKinney, 2005. Encounter life-size animatronic dinosaurs along nature trails. [heardmuseum.org](http://heardmuseum.org). COURTESY PHOTO

**YOU CAN BE  
ANYTHING**



**Imagine the Possibilities**

A seven-year-old professor? Veterinarian? Soccer coach? Business professional? Why not? Girls imagine what they may one day become.

# Marshall Performance Center Announces New Season



The new season for the Memorial City Hall Performance Center (MCH) in Marshall, Texas, has something for everyone.

Georgette Jones kicks things off on September 14. The only daughter of country music royalty George Jones and Tammy Wynette, Georgette started singing on stage at three years old. She recorded two duets with her father, toured across America, Canada, and overseas, and performed at the Opry and the Ryman in Nashville. Tickets range from \$41 to \$51.

On October 19 see the group Uptown with a Bruno-Mars-caliber stage presence including top-tier vocals and wall-to-wall choreography. Uptown combines the smooth stylings of R&B, Motown, and the fresh hits of today in a unique and modern show that gets the crowd on their feet. Born in New York City, the group exudes unparalleled energy with their blend of contemporary radio hits and classic Motown music. Each member of Uptown is a world-class soloist, with frequent comparisons to the artistry of icons like Stevie Wonder and Marvin Gaye; when they come together as one collective, the resulting remix

creates an electrifying show. Tickets range from \$36 to \$46.

A special event at MCH on November 2 features award-winning, platinum-selling country music star Deana Carter. She had a #1 single hit, “Strawberry Wine” and is celebrating the 25th anniversary of her ground breaking album “Did I Shave My Legs for This?” Tickets range from \$61 to \$71.

The Dallas String Quartet (DSQ) performs on December 6. The international music sensation referred to as “Bach meets Bon Jovi” is compared to artists like Lindsey Stirling, Vitamin String Quartet, Brooklyn Duo, and 2Cellos. They use both traditional and electric strings performing as a quartet with the full accompaniment of drums and guitar and are known for their eclectic renditions of everything from Guns N’ Roses “Sweet Child O’ Mine” to Taylor Swift’s “Anti-Hero” to their collaboration, “You Are The Reason,” with The Piano Guys. DSQ has performed for Presidents Obama and Bush; with superstars Ed Sheeran, Luke Combs, and Ashley McBryde; at the Academy of Country Music Awards; for NBA and NFL organizations; and their

*Deana Carter performs November 2 at Memorial City Hall Performance Center in Marshall.*

---

cover of Katy Perry’s “Firework” was featured on TV’s *American Idol*. Tickets: \$56, \$51, \$46

The new year at MCH features The Music of Sam Cooke starring Bradd Marquis on January 18. This show depicts the life and music of one of America’s most iconic and talented performers, the legendary Sam Cooke. A rip roaring soulful performance takes place alongside a live big band. Sam Cooke, the inventor of soul music and the most popular and beloved performer of his time is commonly known as The King of Soul for his distinctive vocal abilities, melding elements of R&B, Gospel and Pop into a sound that was new and still coalescing at the time. This world premiere concert features his greatest hits including “You Send Me,” “Only Sixteen,” “Cupid,” “Chain Gang,” “Twistin the Night Away,” “A Change is Gonna Come,” and “Wonderful World” to name a few. Tickets: \$46, \$41, \$36

An exclusive event taking place at MCH on January 25, 2025, features the band Shenandoah. When country music lovers talk about the greatest groups in the genre,

Shenandoah is often at the forefront of discussion. Fueled by Marty Raybon's distinctive vocals and the band's skilled musicianship, Shenandoah became well known for delivering such hits as "Two Dozen Roses," "Church on Cumberland Road," "Next to You, Next to Me," and "I Want to be Loved Like That." Their duet with Alison Krauss "Somewhere in the Vicinity of the Heart," won a Country Music Association Award for Vocal Event of the year and a Grammy for Best Country Performance by a Duo or Group with Vocal. Shenandoah also won the Academy of Country Music's Vocal Group of the Year in 1991. Tickets: \$91, \$86, \$81.

My Funny Valentine with Pat Hazell & Amy Barnes takes place on February 15. Pat Hazell is one of the original writers for NBC's *Seinfeld* and a veteran of *The Tonight Show*. Amy Barnes was featured on *Comedy Central* and *National Lampoon*. They join forces for an evening of hilarious and heartwarming stand-up comedy. Tickets: \$41, \$36, \$31

On March 8 join East Texas native Linda Davis for An Evening in the Round. Davis' unique ability to interpret a song has made her one of Nashville's favorite vocalists. The Texas Country Music Hall of Fame member has played to sold-out crowds with the likes of Garth Brooks, George Strait, Reba McEntire, and Kenny Rogers just to name a few. Together with hit songwriters Bill Whyte and Lang Scott, the three-time Grammy winner perform an intimate, acoustic show playing songs and sharing stories with humor and down home appeal. Tickets: \$51, \$46, \$41.

The Memorial City Hall Performance Center has fast become a favorite venue in East Texas for show producers. In addition to MCH productions, guests can enjoy much more music and theater coming soon including Gene Watson (July 20), Texas in Paris (August 9-11), Pam Tillis (September 12), Texas Sounds International Country Music Awards Festival (October 3-5), and Jimmy Fortune (October 25).

New shows are added often so check the website for those and to get tickets and more information for all shows. [memorialcityhall.com](http://memorialcityhall.com).

**Winnsboro Cowboy**  
MUSIC AND POETRY GATHERING

SEPTEMBER 27 AND 28

Photograph usage courtesy of Jerry Goodale

**WCA**  
WINNSBORO  
CENTER FOR THE ARTS

[WinnsboroCenterForTheArts.com](http://WinnsboroCenterForTheArts.com)

f i



## Discover the Treasures of 211 Gallery

DISPLAY GALLERY. EXHIBITS. CLASSES. ART SHOWS.



211 North Palestine Street, Athens, TX  
[ArtGallery211.net](http://ArtGallery211.net) • (903)292-1746

# See Music and Theatrics on The Bowery Stage

Summer offerings on The Bowery Stage at the Winnsboro Center for the Arts include two concerts and a play.

## Topo Chico Cowboys

Josh Grider and Drew Kennedy as The Topo Chico Cowboys perform at 7:30 p.m. July 13, with Clint Alford opening. Called “a poet of optimism and maturity” by *Lonestar Music* magazine, Grider is a Texas-by-way-of-New-Mexico songwriter and performing artist who fully embraces his status as a musical Swiss Army Knife. From solo sets on storied stages like the Kerrville Folk Festival to honky-tonk dance halls across the Southwest to “rock yachts” and even house concerts, Grider is taking his sound further and to more people than ever before.

Kennedy is a songwriter-troubadour, originally from Pennsylvania. He began playing music in college, along with baseball. He moved to the Texas Hill Country a few decades ago. Over the years, Kennedy has captivated audiences far and wide with his poignant storytelling and amazing craftsmanship of song lyrics. A guitar in hand and a voice that sounds like the truth, Kennedy has become a revered figure in the world of Americana and folk music. He has released nine albums, has taken part in numerous collaborations, penned a novel, and created two annual songwriter festivals.

Together, Grider and Kennedy have released three volumes under their alter-



ego-duo, the Topo Chico Cowboys.

## Jamal Mohamed

Born in Lebanon and raised in Chicago, Jamal Mohamed takes advantage of his wide cultural experiences, transporting them into diverse musical events which include live and studio work with Sting, Mark O'Connor, and Giovanni Hidalgo. His long list of recordings for film and television documentaries and specials and is a widely acclaimed educator and clinician whose work has carried him literally across the globe: numerous percussion appearances in Bali and Jakarta festivals, opera soloist spots in Hong Kong and Beijing, and a variety of rhythmic roles from Yukon to Mexico City. Mohamed takes special interest in

*Josh Grider and Drew Kennedy (above), aka The Topo Chico Cowboys, perform on July 13. Jamal Mohamed (below) shares his world percussion music in an afternoon performance August 3.*

the oppressed and disabled and formed Arts for People, which aids challenged individuals to this day. He is currently a resident instructor at Southern Methodist University and the Meadows School of Fine Arts.

## Dancing at Lughnasa

Written by Brian Friel and directed by Dr. John A. Price, The Bower Players perform *Dancing at Lughnasa* August 16-18 and 23-25. *Dancing at Lughnasa* is a memory play told from the point of view of the adult Michael Evans, the narrator. He recounts the summer in his aunts' cottage when he was seven years old. Set in the summer of 1936, the play depicts the late summer days when love briefly seems possible for five of the Mundy sisters (Maggie, Chris, Agnes, Rose, and Kate) and the family welcomes home the frail elder brother, Jack, who has returned from a life as a missionary in Africa. However, as the summer ends, the family foresees the sadness and economic privations under which they will suffer as all hopes fade.

Get tickets for all shows on Winnsboro-CenterForTheArts.com or call (903) 342-0686 for more information.



# Unleashed Gala Supports Pet Therapy Healing



Therapet nonprofit organization based in Tyler, Texas, provides Animal Assisted Therapy (AAT) as well as visitation programs to facilitate healing and rehabilitation of patients with acute or chronic diseases. Celebrating 30 years, their Therapet volunteers take specially trained and certified pets to hospitals, schools, prisons, events, libraries, and other organizations to provide motivation, comfort, and inspiration to those in need.

They currently have 70-plus dogs, three cats, and a cockatoo working in their programs. Their goal-oriented therapy brings their well-trained animals to help

with such things as patients' range of motion, strength and endurance, balance and mobility, and sensation. Cognitive and perceptual deficits can also be addressed during sessions.

Facilities served by Therapet include Christus Trinity Mother Frances Rehabilitation Hospital (a partner of Encompass Health), Christus Mother Frances Hospital, UT Health East Texas, and East Texas Crisis Center, with patients from all over Northeast Texas.

Therapet is a 100 percent donor-supported volunteer organization and they receive donations ([therapet.org/](http://therapet.org/)

donate) throughout the year. They also hold an annual fundraiser each fall. This year's event is the Totally Unleashed Masquerade Gala taking place from 6:30 to 10:30 p.m. October 26, at W.T. Brookshire Conference Center in Tyler.

The evening includes live and silent auctions, music by Big Daddy Band, dinner, drinks, and games. To donate to the auctions, become a sponsor, or get tickets, go to the event page ([therapet.org/unleashed](http://therapet.org/unleashed)) on their website.

For more information about Therapet, visit their website at [www.therapet.org](http://www.therapet.org) or call (903) 535-2125.

# WHY THE ARTS MATTER IN TEXAS



## NATIONAL ARTS FACTS

### FOR-PROFIT & NON-PROFIT ARTS & CULTURE SECTORS REPRESENT

**4.31%** Nation's GDP      **5.2 M** Jobs

**\$1.102 TRILLION** Arts & Culture

**\$920.5 B** Transportation

**\$438.2 B** Utilities

The national arts and culture sector was a **\$1.102 trillion industry** in 2022 (4.31% of the nation's GDP), representing **5.2 million jobs** (3.28% of nation's workforce), and total compensation of **\$540.9 billion**.

Source: U.S. Bureau of Economic Analysis & National Endowment for the Arts (2024). Data collected for 2022.

## TEXAS ARTS FACTS

### FOR-PROFIT & NON-PROFIT ARTS & CULTURE SECTORS REPRESENT

**2.47%** State's GDP      **383,066** Jobs

**\$59.3 BILLION** Arts & Culture

**\$93.6 B** Transportation

**\$41.4 B** Utilities

The Texas arts and culture sector was a **\$59.3 billion industry** in 2022 (2.47% of the state's GDP), representing **383,066 jobs** (2.76% of Texas' workforce), and total compensation of **\$30.2 billion**.

Source: U.S. Bureau of Economic Analysis & National Assembly of State Arts Agencies (2024). Data collected for 2022.

## ECONOMIC IMPACT OF NON-PROFIT ARTS & CULTURE INDUSTRY AND AUDIENCES

National

**\$151.7 B** Economic activity annually

**2.6 M** Jobs supported by economic activity

In 2022, the impact of this economic activity generated **\$29.1 billion** in total tax revenue to federal, state, and local governments.

**88.5%** of audiences agreed with the statement "This arts activity/venue is inspiring a sense of pride in this neighborhood or community"

**87%** of audiences agreed with the statement "My attendance is my way of ensuring that this activity/venue is preserved for future generations"

Source: Americans for the Arts, 2023. Arts & Economic Prosperity 6.

## ECONOMIC IMPACT OF NON-PROFIT ARTS & CULTURE INDUSTRY AND AUDIENCES

Regional Snapshot: Dallas-Fort Worth-Arlington MSA, TX

**\$1.5 B** Economic activity annually

**25,174** Jobs supported by economic activity

In 2022, the impact of this economic activity generated **\$313.5 million** in total tax revenue to federal, state, and local governments.

**89.4%** of audiences agreed with the statement "This arts activity/venue is inspiring a sense of pride in this neighborhood or community"

**87.3%** of audiences agreed with the statement "My attendance is my way of ensuring that this activity/venue is preserved for future generations"

Source: Americans for the Arts (2023). Arts & Economic Prosperity 6. 2022 data collected for the Dallas-Fort Worth-Arlington MSA, TX.

## FEDERAL FUNDING FOR THE NATIONAL ENDOWMENT FOR THE ARTS

Federal Appropriation FY24      **\$207 Million**

Congress allocated **\$207 million** to the National Endowment for the Arts (NEA) in **FY24**. This amounts to just **62 cents per capita**. Ideally, Congress should index \$1 per capita funding to the NEA.

Source: Americans for the Arts Action Fund, 2024.

## PUBLIC FUNDING RECEIVED FOR TEXAS ARTS & CULTURE SECTOR

State Appropriation FY24      **\$14,309,718**

NEA State Grant FY24      **\$1,372,000**

119 NEA Direct Grants FY23      **\$4,443,250**

Source: Texas Commission on the Arts & NEA, 2024

3/6/2024

# TEXAS ARTS HIGHLIGHTS

IN THE LONESTAR STATE, THE ARTS UNITE US



The **Texas Touring Arts Program** serves the nation's largest rural population with outstanding Texas-based companies and artists in their own communities.

## TEXAS COMMISSION ON THE ARTS

was established by the Texas Legislature in 1965 to advance the state economically and culturally by investing in a creative Texas. By providing resources to enhance economic development, arts education, cultural tourism, and artist sustainability initiatives, the Texas Commission on the Arts supports a diverse and innovative arts community statewide.

**Executive Director: Gary Gibbs**

**Chair: Dale Brock**



[Learn more here.](#)

## BE SURE TO CHECK OUT

**Arts and Culture Texas** is a state-wide magazine focused on the contemporary visual and performing arts across Texas.

- Texans for the Arts**
- Texas Cultural Trust**
- Texas Music Educators Association**
- Texas Folklife**
- Texas Association for Symphony Orchestras**
- Art Spark Texas**
- Texas Hotel & Lodging Association**
- Texas Dance Educators Association**
- Texas Educational Theatre Association**
- Texas Downtown Association**
- Texas Association of Museums**
- Humanities Texas**
- Theatre Network of Texas**
- Texas Creative Placemaking Initiative**

**TEXANS FOR THE ARTS** is a highly effective, non-partisan statewide arts advocacy organization whose mission is to secure, protect and grow the public investment in the arts and to advocate for the development and implementation of public policy that supports a strong and vibrant arts and cultural industry.

**Executive Director: Ann S. Graham**  
**Chair: Fiona Bond**



TEXANS FOR THE ARTS

[Learn more here.](#)  
[Join here.](#)

## THE ARTS ARE EVERYWHERE

### Designated TCA Cultural Districts

Texarkana, Winnsboro, Longview, Denison, Sherman, McKinney, Plano, Garland, Dallas Fair Park, Dallas Deep Ellum, Dallas Arts District

### Music Friendly Communities

Corsicana, Denison, Dallas, Lindale, Linden, Lufkin, Nacogdoches, McKinney, Waxahachie, Frisco, Tyler, and Chandler. In process are Carthage, Texarkana, Sherman, Rockwall, Crockett, and Kilgore.

### Programs for Rural Communities

Texas has the nation's largest rural population, with more than 3.8 million rural residents. Texas Commission on the Arts (TCA) recognizes that arts and cultural activity is thriving all across the state. They also know there are challenges in getting their services to rural communities. TCA has opportunities designed to serve these communities and are interested in ways to better serve rural Texans.

### Texas Touring Roster

The Texas Commission on the Arts has accepted and is promoting 139 Texas artists and arts companies for the TCA Texas Touring Roster for 2024-2026. The Texas Touring Roster features some of the state's best artistic talent and is designed to ensure that all Texans may enjoy events and performances by these artists in their local communities. They represent artistic disciplines including music, visual art, dance, theater, storytelling, literary art and folk art.

As of 2/6/2023



**JOIN THE ARTS ACTION FUND FOR FREE TODAY!**

**E-MAIL US:** [ArtsActionFund@artsusa.org](mailto:ArtsActionFund@artsusa.org)

**VISIT US:** [ArtsActionFund.org](http://ArtsActionFund.org)

**FOLLOW US:**



## Give & Take Collaborations Featured at LMFA



The *Give & Take Collaborations* art exhibition at Longview Museum of Fine Arts (LMFA) is a collaboration between Derrick White, Chair of the Art Department at Tyler Junior College with his students. Each unique creation tells its own story. The exhibition is on view through September 15.

*My Peoples* art exhibition continues through September 14. Mother-daughter duo expand their collaborative “My Peoples” works by partnering with other local artists.

The exhibition *Cultural Connect* continues through December. Celebrating American artists from their diverse Permanent Collection, it includes Jewish-American, Native-America, Asian-American, African-American, Naïve or Self-taught, Latin-American, U.S. Veterans, East Texas and local artists.

LMFA also features two concerts this summer: Ellis Paul on July 14, and Striking Matches on August 16. Find out more about LMFA exhibitions and other events on [lmfa.org](http://lmfa.org).



# Two Summer Shows Stand Out at Tyler Museum of Art



*Surroundings: Works from Permanent Collection* is on display through August 4 at the Tyler Museum of Art. The exhibition presents a variety of artistically captured landscapes and cityscapes as well as other observations from daily life. The selected works offer unique perspectives on everyday objects and places, transforming the mundane into noteworthy.

From paintings to photographs, the featured works include recent acquisitions being exhibited for the first time to TMA crowd favorites.

Through September 15 is *Tongue in Chic* featuring the exclusivity of high fashion and the familiarity of everyday life merged in the work of Texan designer Todd Oldham. Through Oldham's trademark wit and commitment to craft, images and items transform into unexpected delights. Conservative paisley neckties and plaid picnic blankets become wearable works of art, and travel magazines and Lite Brite toys serve as sources of inspiration. Through this creative alchemy, Oldham encourages people to celebrate the world around them and delight in the everyday.

This exhibition is presented in collaboration with the Texas Fashion Collection, an archive at the University of North Texas



College of Visual Arts and Design.

Oldham was born in Corpus Christi, Texas, and designed his first dress at age 15 by stitching together some pillowcases. He moved to Dallas after graduating high school. His first job was in the alterations department at Polo Ralph Lauren. Around that time he put together a tiny collection that he sold to Neiman Marcus. While in Dallas, Oldham showed his first

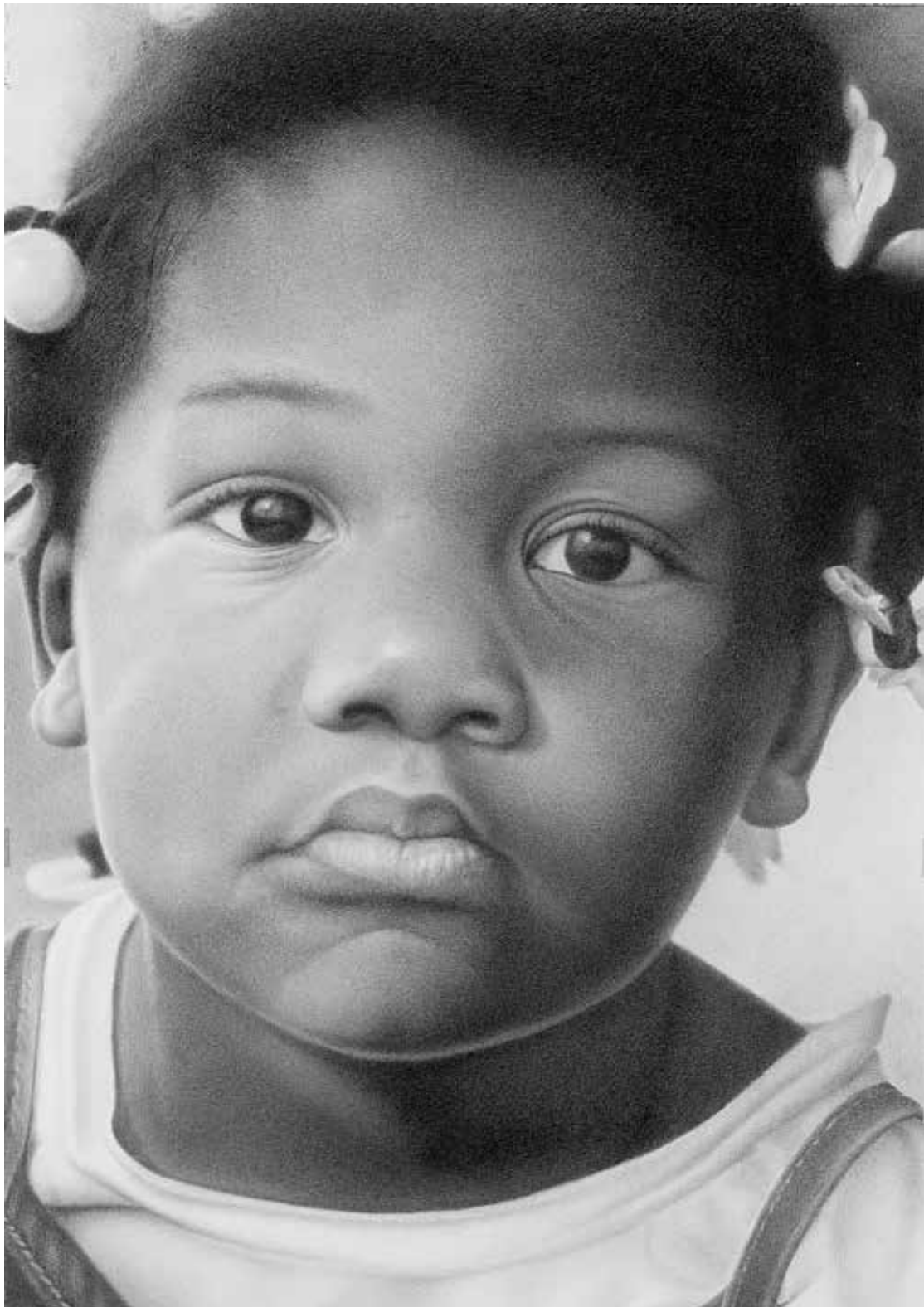
collection in 1981, launched his first clothing line in 1989 and began winning awards. He moved to New York City in 1988.

He's had a long career in fashion, home decor, books, television, and philanthropy. Learn more about him on [toddoldhamstudio.com](http://toddoldhamstudio.com).

For operating hours and more information about Tyler Museum visit [TylerMuseum.org](http://TylerMuseum.org).

# *Shared Vision*

Couple's Art Featured Together in Marshall Museum



The Michelson Museum of Art in Marshall, Texas, presents *Shared Visions*, an exhibition of works by Marjorie Williams-Smith and AJ Smith of Little Rock, Arkansas. On display until August 3, the exhibition brings together the individual styles of each artist.

Marjorie states that drawing is as much about the process as it is the product.

“The work progresses slowly as I concentrate on relationships between shapes, light, shadows, and textures. Line is my primary tool, as it is hatched and cross-hatched to create the subject. The color of the page is also important in that it provides contrast and space for the form to move and speak.

“While I have worked with other subjects, I find myself returning to flowers for visual reference. Most often these flowers are dried and seem to have another life beyond their present fragile state. They represent the passage of time, energy, life, and spirit. Silverpoint is my primary medium because it enhances the qualities I hope to present.

AJ is currently a professor in the Art Department at the University of Arkansas at Little Rock. He is a master printer in fine art printmaking.

He is recognized for an extensive exhibition record to include national and international venues and is included in *Who’s Who in American Art*, 24th Edition. Art review publications to include his artwork are the *New York Times*, *Los Angeles Times*, *Flash Art Magazine*, and *Art Forum*. His work is represented in public and private collections throughout the United States, China, and Czech Republic.

The Michelson Museum of Art is located at 216 North Bolivar in Marshall and is open from 10 a.m. to 4 p.m. Tuesday through Friday and 10 a.m. to 1 p.m. on Saturday. Admission is free. Call (903) 935-9480 or visit [michelsonmuseum.org](http://michelsonmuseum.org) for more information.

---

*“Cherinna”* (opposite page) is a graphite pencil sketch by AJ Smith. *“Angels”* (top right) and *“Concentration/Reverberation”* (bottom right) are by Marjorie Williams-Smith using silverpoint on black acrylic gesso.



# Hoover Watercolor Society

*66th Annual Exhibition is On Display at Michelson Museum*



The works by the traveling Hoover Watercolor Society is on display at the Michelson Museum of Art in Marshall, Texas, through August 3. The group was organized in 1958 in Louisiana and comes to Marshall annually. A juried show, winners for this year's exhibit include:

Best in Show, "Orchid Ecstasy" by Patty Abell; First Place, "Alone Together" by Judy Horne; Second Place, "White Hot" by Christine Bailey; Third Place, "Avenezia" by Mike Torma; Honorable Mentions, "Japanese Garden Stroll" by Sherri Skrivanos and "San Miguel de Allende" by Martha DeSoto; and Honorarium, "A Couple of Weighty Subjects" by Denise Sanders.

The Michelson Museum of Art is located at 216 North Bolivar in Marshall and is open from 10 a.m. to 4 p.m. Tuesday through Friday and 10 a.m. to 1 p.m. on Saturday. Admission is free. Call (903) 935-9480 or visit [michelsonmuseum.org](http://michelsonmuseum.org) for more information.

---

*"Orchid Ecstasy," (above) by Patty Abell; "Japanese Garden Stroll," (opposite, top) by Sherri Skrivanos, and "Avenezia," (opposite, bottom) by Mike Torma.*



# WCA Hosts Central Texas Artists



Winnsboro Center for the Arts (WCA) welcomed artwork from the Professional Artists of Central Texas (PACT) for their current exhibition that runs through July 20. PACT is a nonprofit organization of artists working in all mediums in two and three dimensions and photographic art. For the Winnsboro show, 18 of the PACT artists are represented.

The next exhibition at WCA is Women in the Arts showing from July 24 to September 21.

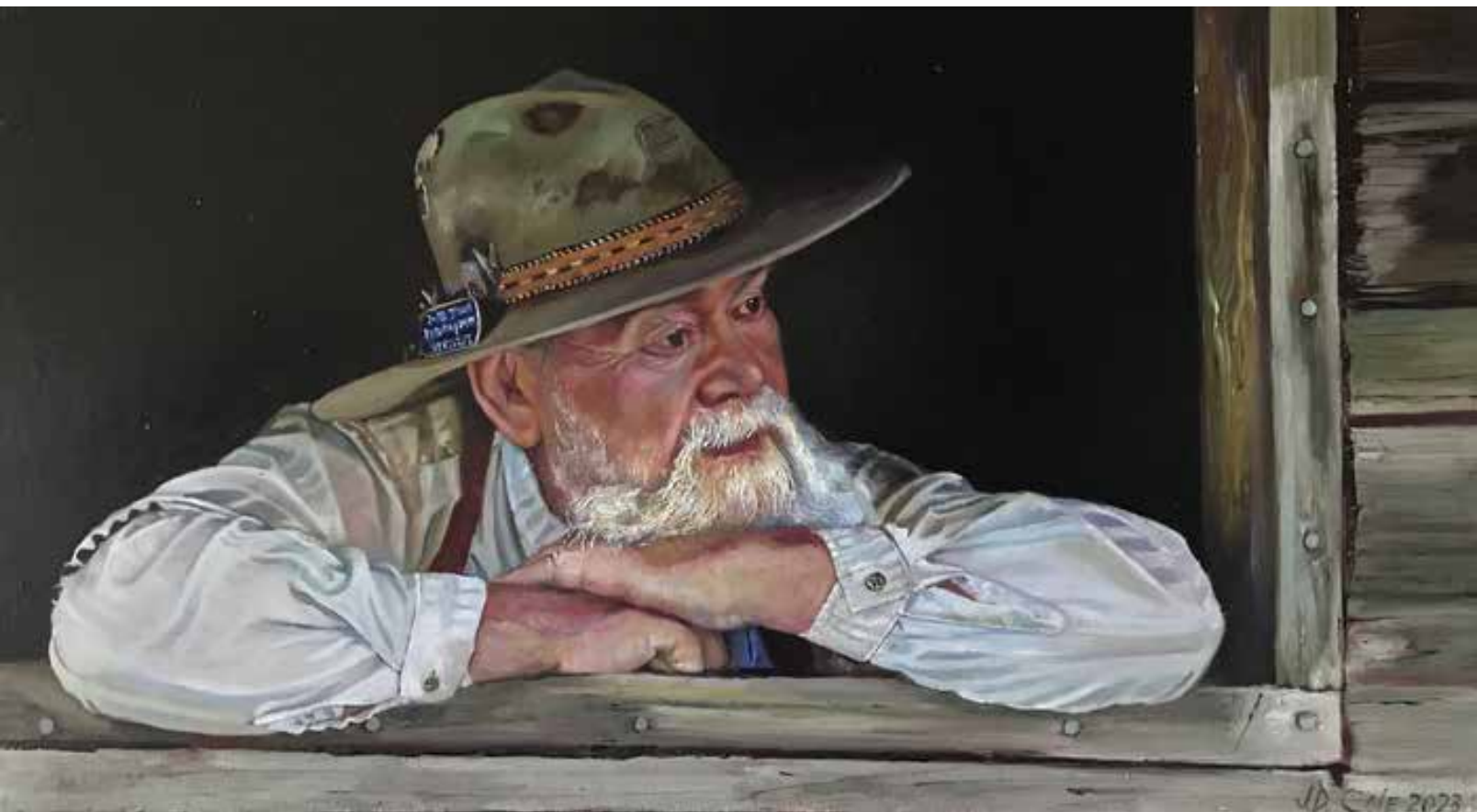
WCA is located in downtown Winnsboro and is open from 10 a.m. to 5 p.m. Wednesday through Saturday. Call (903) 342-0686 and visit [WinnsboroCenterForTheArts.com](http://WinnsboroCenterForTheArts.com) for more information.

---

*Some of the artwork in the current exhibition is by artists Susan Sistrunk (above), Wendy Michelle Davis (opposite top), and Dary Dega (opposite bottom).*



*Women in the Arts*  
WCA ANNUAL EXHIBITION OF WOMEN ARTISTS  
JULY 24-SEPTEMBER 21  
RECEPTION AUGUST 1ST, 4-6PM



## Juried Art Exhibit is On Display in Texarkana

Texarkana Regional Arts and Humanities Council (TRAHC) presents the 36th Annual Adult Juried Exhibition through August 10.

With more than 100 accepted pieces of art from both local and national artists, this year's show is filled with incredible and engaging work. The pieces on display range in medium, including painting, embroidery, photography, drawing, sculpture and printmaking among others.

Juror Dr. Trina Harlow specifically sought out technique, composition, skill, craftsmanship and story in the pieces she selected.

"As I juried this exhibition, I sat and studied the entries and tried to step into the story the artist was telling or my visual processing imagined the story that I thought was told by each piece of art. There were hints of family members,

memories of childhood, awakened and remembered history, flora and fauna, naturescapes, emotion, the supernatural, landscapes and cityscapes, seasons of life and time, scenes of patience and thought and pausing in moments of time, representative and non-representative art, and outstanding creative expression from new and experienced artists," she says.

Interim Director of Visual Arts Kay Thomas appreciates this annual show.

"It gives artists a place to show, and for a lot of the local artists, it's the first venue into professional exhibition. That's a really important thing for them. For the people of Texarkana and visitors, it gives them a chance to see art from all around the country and sometimes from other countries, right here."

Prizes were awarded include Best in Show, "Old Timer," by JD Cole of Na-

cogdoches; First Place, "Witness," by Ellis Barber of Waco; Second Place, "Network or Identity Game," by Arlet Gomez of Greenacres, Florida; Third Place, "Cream on Top," by Ying Xiong of San Francisco, California; and Fourth Place, "7th Period," by Darla Barolini of Denton.

The art is on display at the Regional Arts Center, 321 West 4th Street in Texarkana. It is open to the public Tuesday through Saturday from 10:00 a.m. to 4 p.m. and, like all of TRAHC's visual art exhibits, is free to the public. School and civic group tours are available upon request. This exhibit is generously sponsored by the Yates Foundation.

Go to [trahc.org](http://trahc.org) for more information.

---

*"Old Timer" (above), by JD Cole won Best of Show in the TRAHC 2024 Adult Juried Exhibition. "Swinging Thoughts" (opposite), by Arlet Gomez.*





# Craighead Green Features New Texas Talent



Discover some of Texas' newest emerging artists at the annual *New Texas Talent* exhibition taking place July 20 through August 24 at Craighead Green Gallery in Dallas. Celebrating its 31st anniversary, the New Texas Talent campaign gives local Texas artists an opportunity to present their work in a gallery setting and delve into the art market.

Each year hundreds of images are submitted for review and a seasoned juror selects artists to participate in the exhibition. This year 52 pieces were selected for the show. Through their participation in the show, some artists are offered representation by galleries and/or receive invitations for inclusion in future exhibitions.

This year's juror is Jessica Fuentes. She has exhibited her work locally for more than a decade and is a former member of the F6 Gallery Collective and 500x gallery. In 2023, her work was included

in the 18th Annual Joyce Elaine Grant Exhibition at Texas Woman's University in Denton.

As an art educator with more than 15 years of experience, Fuentes taught in public schools, higher education, and museums. She was instrumental in developing the C3 Visiting Artist Project at the Dallas Museum of Art and the Carter Community Artists initiative at the Amon Carter Museum of American Art. Fuentes has contributed to institutional publications and national blogs. She authored a chapter in the book *Creating Meaningful Museum Experiences for K-12 Audiences: How to Connect with Teachers and Students* (October 2021), edited by Tara Young, and has published articles in the *Journal of Museum Education* and the *Art Education Journal*. In 2023, she was named a recipient of The Andy Warhol Foundation Arts Writers Grant.

Fuentes was the founding director of

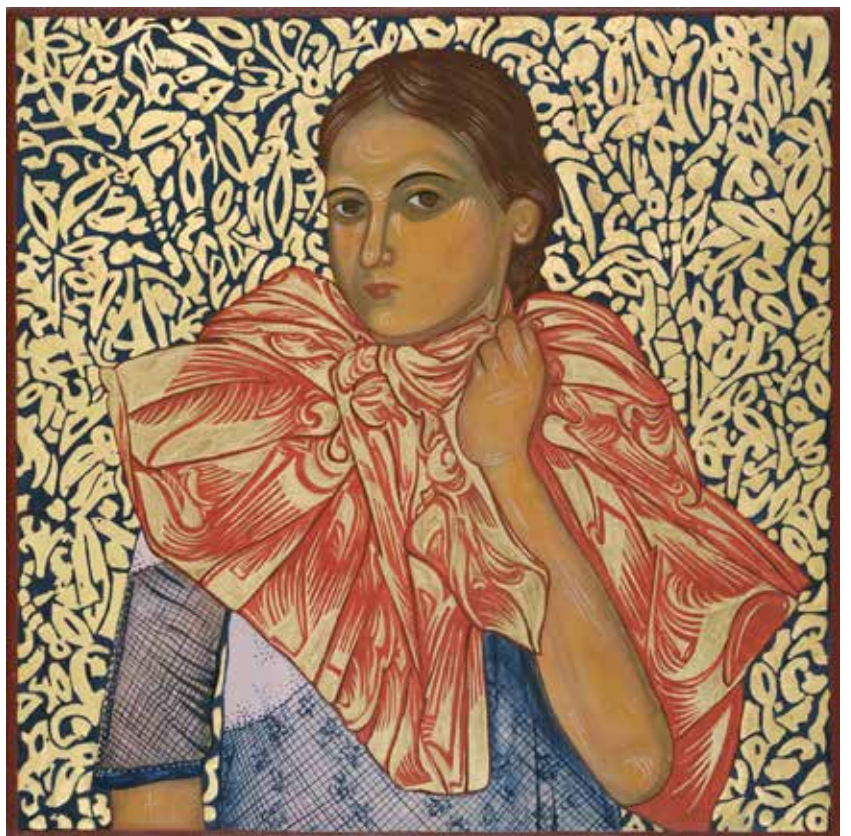
Kinfolk House and currently serves on the organization's board. She is the news editor for *Glasstire* and a freelance museum consultant. Additionally, she serves on the board of Make Art with Purpose (MAP).

An opening reception takes place from 5 to 8 p.m. Saturday, July 20 with many of the artists attending. Craighead Green Gallery is located at 167 Parkhouse Street and is open from 10 a.m. to 5 p.m. Tuesday through Friday and 11 a.m. to 5 p.m. on Saturday.

Get more information on [craigheadgreen.com](http://craigheadgreen.com) or call (214) 855-0779.

---

*A few pieces of artwork from the show include "Touching the Source" (above) by Donny Bodine, and (opposite top left, clockwise) "Sin Re Cuertos" by Jose Vasquez, "Eve Gene" by Cedric Ingram, "Emily-High Priestess of Fashion" by Karen Eisele, and "Blue" by Karl Melton.*



# The Impressionist Revolution from Monet to Matisse



Pierre-Auguste Renoir's, "Lise Seating"

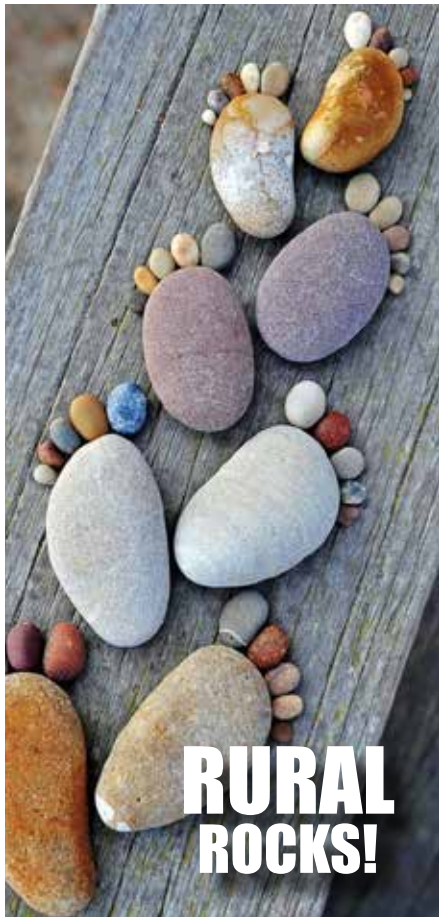
See The Impressionist Revolution from Monet to Matisse at Dallas Museum of Art (DMA) through November 3. The exhibition explores the fascinating story of Impressionism from its birth in 1874 to its legacy in the early 20th century. Told almost entirely through the DMA's exceptional holdings, this show reveals the rebellious origins of the

independent artist collective known as the Impressionists and the revolutionary course they charted for modern art.

Breaking with tradition in both how and what they painted, as well as how they showed their work, the Impressionists redefined what constituted cutting-edge contemporary art. The unique

innovations of its core members, such as Claude Monet, Edgar Degas, and Berthe Morisot, set the foundation against which following generations of avant-garde artists reacted, from Paul Gauguin and Vincent van Gogh to Piet Mondrian and Henri Matisse.

Get more information on [dma.org](http://dma.org).



**RURAL  
ROCKS!**

**MOUNT VERNON MUSIC**

Because Music Belongs To All Of Us

*E pluribus unum musicum*

**Out of many, one music**

2024-2025 SEASON

**903.563.3780 WWW.MOUNTVERNONMUSIC.ORG**



GREENVILLE, TEXAS



**A CITY WITH HEART**

[TRAVELGREENVILLETX.COM](http://TRAVELGREENVILLETX.COM)

Close to the DFW metroplex, Greenville is a great destination for your next weekend trip. Plan your trip today by visiting our website to see everything Greenville has to offer for you!



# Let us lure you Emory, TX

*"The Land Between the Lakes"*



*Emory-  
a great place  
to shop  
while he goes  
fishing!*



**BENT TREE  
MOTEL**

381 W. Lennon Dr.  
903-473-0061

**BW Best  
Western  
PLUS.**

1026 E. Lennon Dr.  
903-473-2022

[www.emorytx.com](http://www.emorytx.com)

Hydraulic & Pneumatic Solutions

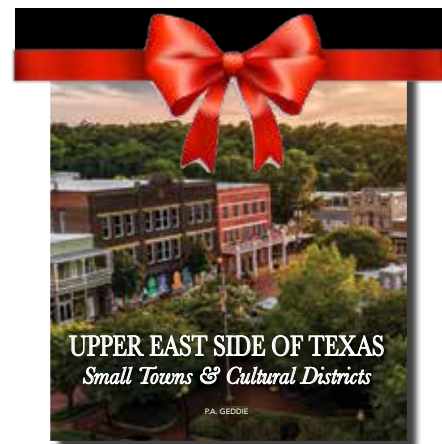
# AAXION INC.

*Convenient Locations*  
TYLER • LUFKIN  
LONGVIEW  
ENNIS • GARLAND



*Distributor for Parker Hoses,  
Fittings, and Connectors*

[WWW.AAXIONINC.COM](http://WWW.AAXIONINC.COM)



**UPPER EAST SIDE OF TEXAS**  
*Small Towns & Cultural Districts*

**Great Gift Idea!**

AVAILABLE ON AMAZON  
AND IN VISITOR CENTERS,  
GIFT SHOPS, AND BOOKSTORES  
IN THE REGION



[www.SpeckledCrow.com](http://www.SpeckledCrow.com)

HARDCOVER & eBook VERSIONS

**FOURWINDS**  
STEAKHOUSE



Tuesday & Wednesday  
**DINNER SPECIAL**

MIXED GREEN SALAD

Choice of FRESH FISH OF THE DAY,  
RIBEYE STEAK, or FILET MIGNON

Served with WHIPPED POTATOES  
and GREEN BEANS \$34.00



Top 100  
American Steakhouses

Best Steakhouse

COUNTY LINE MAGAZINE HALL OF FAME

Located in a beautiful lakeside  
lodge at 21191 FM 47 in  
Wills Point, one block north of  
Interstate 20, Exit 516

Open Tuesday - Saturday  
5 p.m. to 10 p.m.

Available for Special Events

**MAKE A RESERVATION**

**903.873.2225**

[www.fourwindssteakhouse.com](http://www.fourwindssteakhouse.com)

Just play. Have fun. Celebrate!

Downtown Dining District



**Sulphur Springs**  
TEXAS



[www.VisitSulphurSpringsTX.org](http://www.VisitSulphurSpringsTX.org)



Burgers, Premium Hand-Dipped Ice Cream,  
Breakfast Anytime, and more

Open 24/7 at  
I-20 & Hwy 19 in Canton, TX

An East Texas Tradition

903-567-6551 • [dairypalace.com](http://dairypalace.com)



Read the latest recipes and more

**FOOD + DRINK**  
County Line eMagazine



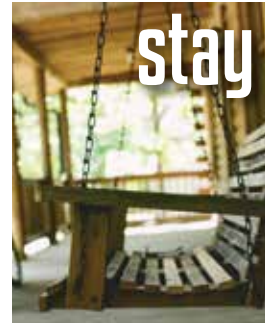
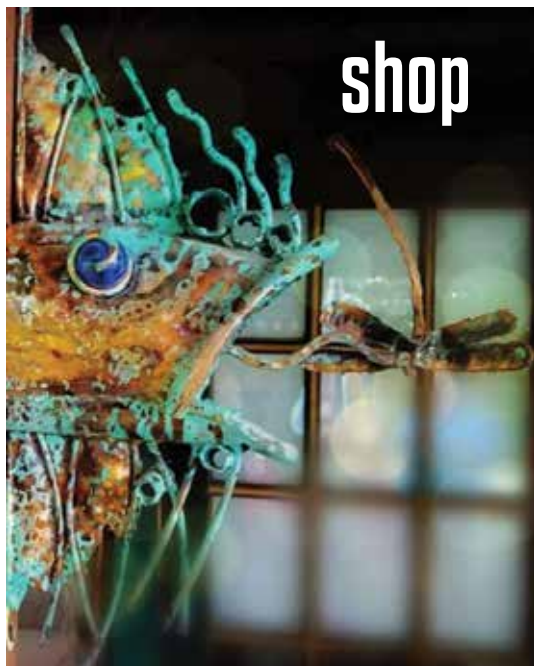


# county line MAGAZINE weekly

GOOD NEWS for the Upper East Side of Texas

## SUBSCRIBE FOR FREE

to receive good news in your inbox every Sunday morning.



Between County Line eEditions, read more about the people, places, and things that make the Upper East Side of Texas the best place to live, dream, and explore.

Includes events, attractions, articles, food, drinks, arts, culture, lifestyle, entertainment, people profiles, and more.

Go to [www.CountyLineMagazine.com](http://www.CountyLineMagazine.com) and click on SUBSCRIBE to find the WEEKLY or email your address to [info@countylinemagazine.com](mailto:info@countylinemagazine.com) with WEEKLY in the subject line.

For assistance, call (903) 312-9556.